

# Anti-TREM1 hIgG1 Antibody

## Product information

GM-26835AB-10	10 µg
GM-26835AB-100	100 µg
GM-26835AB-1000	1 mg

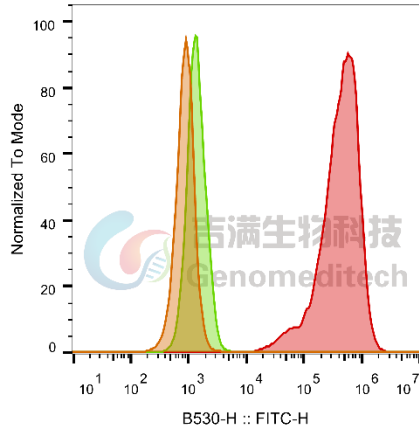
## Antibody Information

Species Reactivity	Human;
Clone	/
Source/Isotype	Monoclonal human IgG1, κ
Application	Flow cytometry; Activation assay;
Specificity	Detects TREM1
Gene	TREM1
Other Names	CD354, TREM-1
Gene ID	54210 (human);
Background	This gene encodes a receptor belonging to the Ig superfamily that is expressed on myeloid cells. This protein amplifies neutrophil and monocyte-mediated inflammatory responses triggered by bacterial and fungal infections by stimulating release of pro-inflammatory chemokines and cytokines, as well as increased surface expression of cell activation markers. Alternatively spliced transcript variants encoding different isoforms have been noted for this gene.
Storage	Store at 2-8°C short term (1-2 weeks).Store at ≤ -20°C long term. Avoid repeated freeze-thaw.
Formulation	Phosphate-buffered solution, pH 7.2.
Endotoxin	< 1 EU/mg, determined by LAL gel clotting assay

## Data Examples

Flow cytometry

H\_TREM1 CHO-K1 Cell Line (Catalog # GM-C13367) was stained with Anti-TREM1 hlgG1 Antibody (Catalog # GM-26835AB) or isotype control antibody, followed by anti-Human IgG APC-conjugated Secondary Antibody.

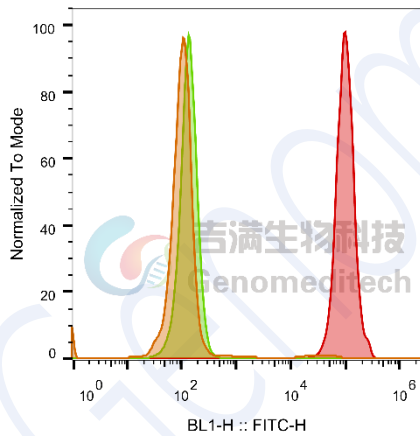


SampleID	Geometric Mean : B530-H
CHO-K1 anti-H_TREM1+FITC-2nd Ab	895
CHO-K1 H_TREM1 H_IgG+FITC-2nd Ab	1419
CHO-K1 H_TREM1 anti-H_TREM1+FITC-2nd Ab	384726

Fig. FACS

Flow cytometry

H\_TREM1 Reporter Jurkat Cell Line (Catalog # GM-C15720) was stained with Anti-TREM1 hlgG1 Antibody (Catalog # GM-26835AB) or isotype control antibody, followed by anti-Human IgG APC-conjugated Secondary Antibody.



SampleID	Geometric Mean : BL1-H
Jurkat anti-H_TREM1+FITC-2nd Ab	110
H_TREM1 Reporter Jurkat H_IgG+FITC-2nd Ab	134
H_TREM1 Reporter Jurkat anti-H_TREM1+FITC-2nd Ab	96771

Fig. FACS

Activation assay

Anti-TREM1 hIgG1 Antibody (Catalog # GM-26835AB) activates the H\_TREM1 Reporter Jurkat Cell Line (Catalog # GM-C15720) after coating, leading to induced luminescence. The EC50 for this effect is 1.808  $\mu\text{g}/\text{mL}$ .

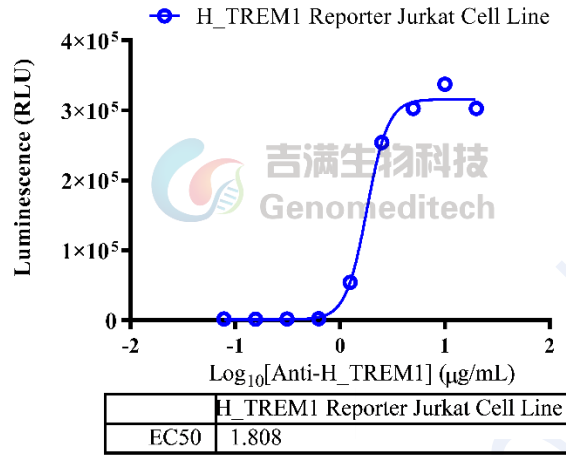


Fig. assay